



SR-4050

TABLE OF CONTENTS

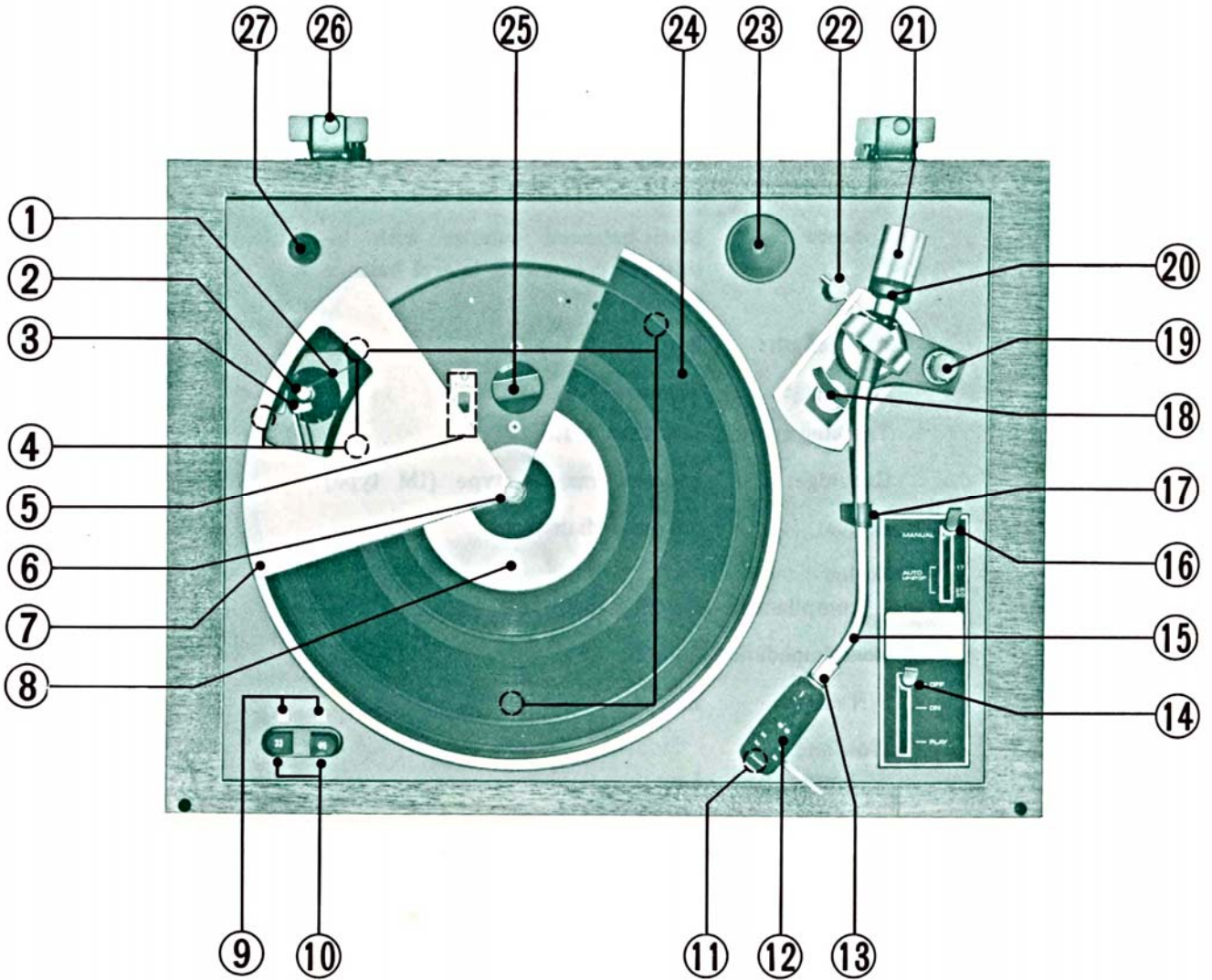
<u>Section</u>	<u>Title</u>	<u>Page</u>
1.	SPECIFICATIONS	6-1
2.	CONTROLS, INDICATORS AND OTHERS	6-2
3.	MAINTENANCE	6-3
3-1.	Changing the capstan	6-3
3-2.	Replacing the cartridge	6-3
3-3.	Oiling	6-4
3-4.	Changing the LINE voltage	6-4
4.	ADJUSTMENT	6-5
4-1.	Adjusting the stylus pressure	6-5
4-2.	Adjusting the inside force canceler	6-5
4-3.	Adjusting the lateral balancer	6-5
4-4.	Adjusting the Auto Lift mechanism	6-5
5.	TROUBLESHOOTING	6-7
5-1.	Turntable not rotating	6-7
5-2.	No sound	6-7
5-3.	Distorted or weak sound	6-7
5-4.	Hum	6-8
5-5.	Rumble (Unusual) sound	6-8
5-6.	Incorrect speed	6-8
5-7.	Improper tracing	6-8
5-8.	Defective Auto Lift and Auto Stop	6-8
6.	EXPLODED VIEW & PARTS LIST	6-11
6-1.	Exploded view (1) and parts list	6-12
6-2.	Exploded view (2) and parts list	6-15
6-3.	Exploded view (3) and parts list	6-16
6-4.	Exploded view (4) and parts list	6-19
6-5.	Packing and accessories list	6-20
6-6.	Auto Lift circuit board	6-21
7.	OPERATION OF AUTO LIFT AND STOP MECHANISM	6-23
8.	WIRING DIAGRAM	6-25

1. SPECIFICATION

Type:	2-speed, belt-driven turntable with Auto Lift, Auto Stop
Rated speeds:	33 ¹ / ₃ , 45 rpm
Motor:	4-pole hysteresis synchronous
Turntable:	Aluminum alloy die-cast, 300 mm (11 ¹ ³ / ₁₆ "), 1.6 kg (3.5 lbs)
Tonearm:	Static-balanced tubular with inside force canceler, lateral balance weight
Arm length:	230 mm (9 ³ / ₆₄ ")
Overhang:	15 mm (1 ⁹ / ₃₂ ")
Tracking error:	Less than ± 1.5°
Cartridge:	Induced magnet type (IM type)
Stylus:	0.5 mil diamond
Stylus compliance:	7 × 10 ⁻⁶ cm/dyne
Load impedance:	50 kΩ
S/N ratio:	Better than 45 dB
Wow and Flutter:	Less than 0.06 %
Frequency response:	20 ~ 20,000 Hz
Output voltage:	5 mV
Crosstalk:	Better than 25 dB at 1 kHz
Stylus pressure:	2 grams
Dust cover:	Smoked acrylic dust cover
Cabinet:	Walnut, open-pore finished
Power source:	100 V, 115 V, 130 V, 200 V, 230 V and 250 V, 50/60 Hz
Dimensions:	Width 505 mm (19 ⁷ / ₈ "), depth 370 mm (14 ⁹ / ₁₆ "), height 198 mm (7 ¹ ³ / ₁₆ ")
Weight:	12.0 kg (26.5 lbs)

※ Manufacturer reserves a right to change design and/or specifications without notice for purpose of improvement.

2. CONTROLS, INDICATORS AND OTHERS



- | | | |
|-----------------------------|-------------------------|-------------------------|
| ① Belt | ⑩ Speed selector switch | ⑲ Inside force canceler |
| ② Capstan | ⑪ Cartridge (Stylus) | ⑳ Stylus pressure scale |
| ③ Belt guide | ⑫ Shell | ㉑ Main weight |
| ④ Shipping bolts | ⑬ Locking nut | ㉒ Lateral weight |
| ⑤ Frequency selector switch | ⑭ Control lever | ㉓ 45 rpm adaptor |
| ⑥ Turntable spindle | ⑮ Tonearm | ㉔ Turntable rubber mat |
| ⑦ Turntable (Platter) | ⑯ Selector lever | ㉕ Voltage selector |
| ⑧ Turntable ring | ⑰ Arm rest | ㉖ Hinge |
| ⑨ Speed indicator | ⑱ Arm lifter | ㉗ Shell stand |

3. MAINTENANCE

3-1. Changing the capstan

The SR-4050's power source frequency has been properly adjusted for the area. If the turntable is brought to the country or area where electrical cycles change from 50 to 60 Hz or vice versa, an adjustment of the turntable is necessary as follows.

1. Remove the turntable (platter) and belt.
2. Loosen the setscrew of the capstan and pull the capstan up.
3. Attach a proper capstan (the thicker one is for 50 Hz).
4. Adjust the height of the capstan so that the belt moves smoothly while changing the turntable speed from $33\frac{1}{3}$ to 45 rpm or vice versa, then tighten the setscrew of the capstan securely.
5. At the same time, set the frequency selector switch for the new frequency by sliding.

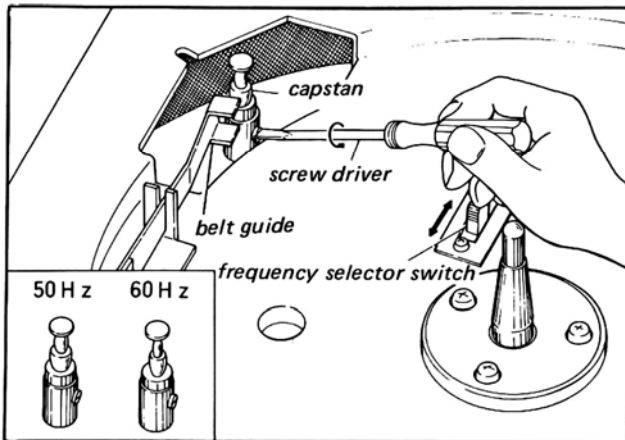


Fig. 3-1

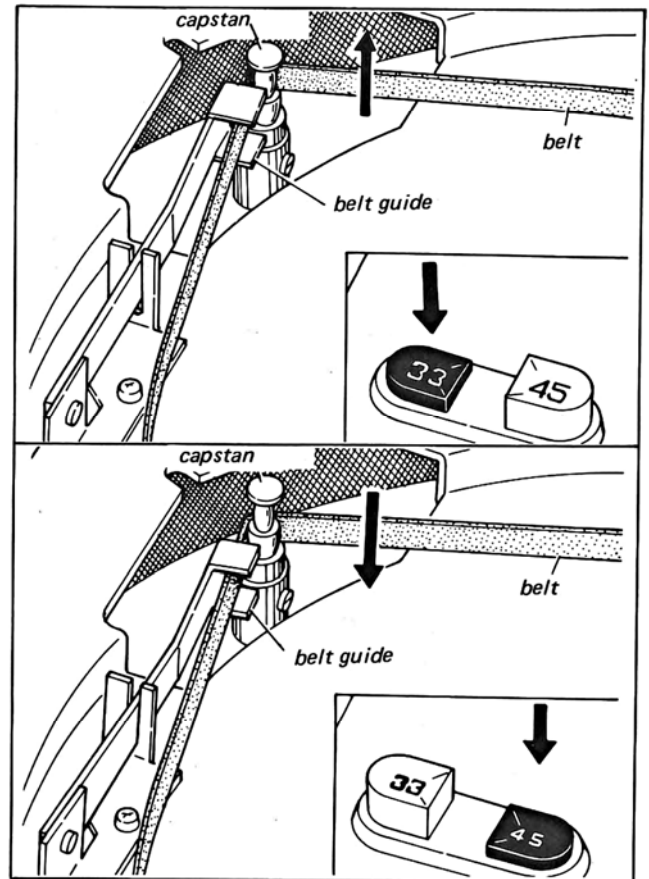


Fig. 3-2

3-2. Replacing the cartridge

1. Turn the locking nut counterclockwise and pull the shell out.
2. Remove the cartridge by loosening the nuts and disconnecting the leads.
3. Attach the cartridge and connect the leads in place correctly.
4. After replacement, adjust the stylus pressure again. (See page 6-5, 4-1. Adjusting the stylus pressure.)

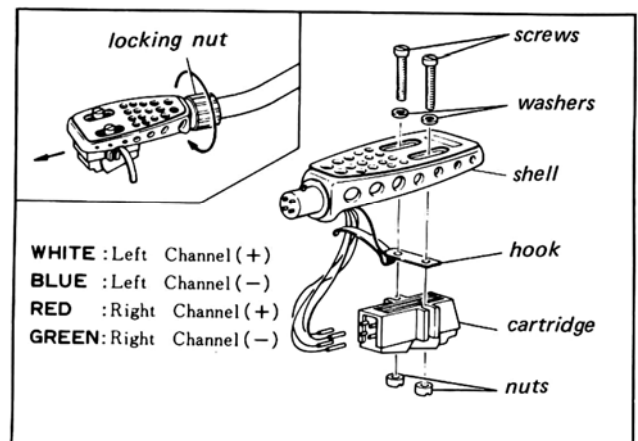


Fig. 3-3

3-3. Oiling

Although the need for oiling depends on usage, oiling should be performed once a year (every 1,000 hours of operations).

1. Motor

Remove the turntable (platter) and apply a few drops of oil. Use only the oil attached with the turntable. Be careful that the oil does not stain the belt or the capstan.

2. Turntable spindle

- 1) Remove the turntable spindle ass'y as Fig. 3-5.
- 2) Loosen the bearing cap, pull the spindle up and apply a few drops of oil.

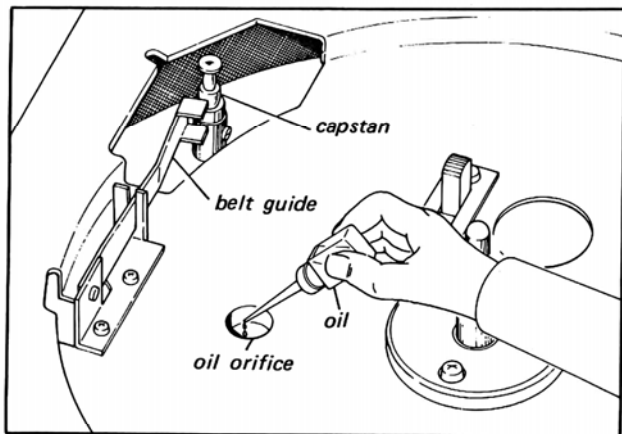


Fig. 3-4

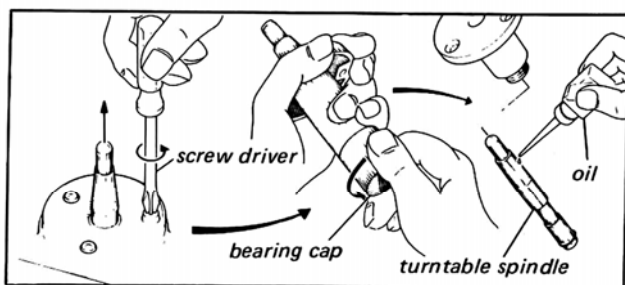


Fig. 3-5

3-4. Changing the LINE voltage

The SR-4050 can be used at six different voltages: 100 V, 115 V, 130 V, 200 V, 230 V and 250 V. Be careful not to switch to the wrong position.

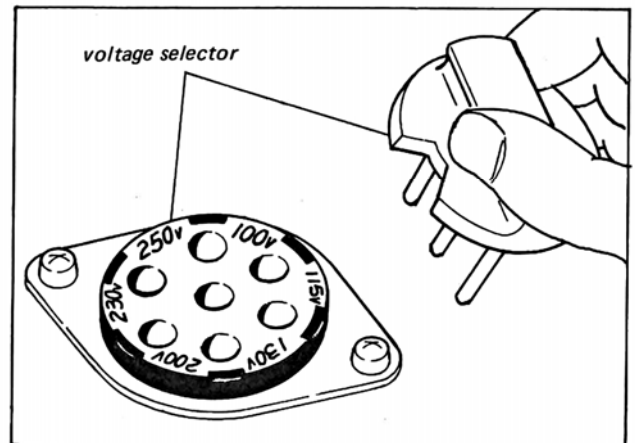


Fig. 3-6

4. ADJUSTMENT

4-1. Adjusting the stylus pressure

1. Remove the stylus cover from the cartridge and set the control lever to PLAY.
2. Remove the tonearm from its rest and move the main weight back and forth until the tonearm balances.
3. Move the stylus pressure scale only so that the "O" mark on it coincides with the marker on the weight shaft.
4. By turning the main weight counterclockwise (as viewed from the front), position it so that the number (specified stylus pressure of the cartridge used) on the stylus pressure scale coincides with the stylus pressure.

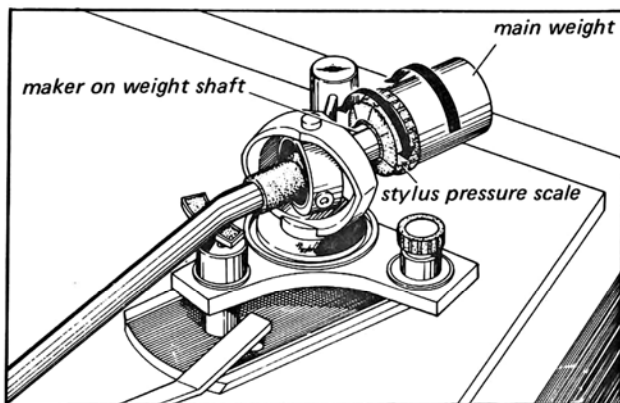


Fig. 4-1

4-2. Adjusting the inside force canceler

Adjust the built-in inside force canceler so that the number on it coincides with the stylus pressure. Each notch on the built-in inside force canceler represents 0.5 gram. To turn the built-in inside force canceler counterclockwise makes outside force stronger.

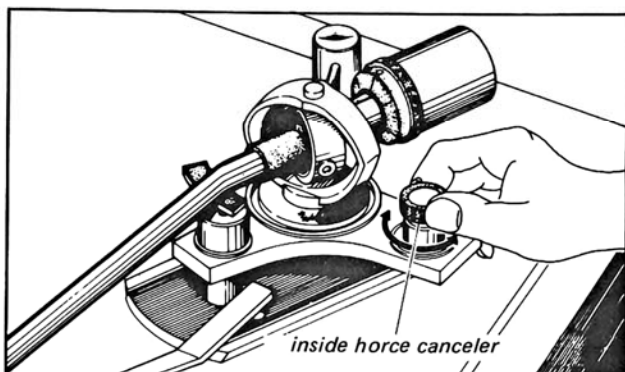


Fig. 4-2

4-3. Adjusting the lateral balancer

1. Cut the AC power off.
2. Balance the tonearm. (See 4-1. Adjusting the stylus pressure.)
3. Move the lateral weight until the tonearm stops at any position as it is placed, while raising the rear bottom edge (hinged side) of the SR-4050 about four inch high.
4. Lateral balance is pre-adjusted for the attached cartridge.

4-4. Adjusting the Auto Lift mechanism

1. Check timing of the Auto Lift (leading or lagging).
2. Adjust the adjusting screw through the hole by the screwdriver as Fig. 4-3. To turn the screw clockwise is for leading and counterclockwise is for lagging. After adjustment, check its operation a few times.

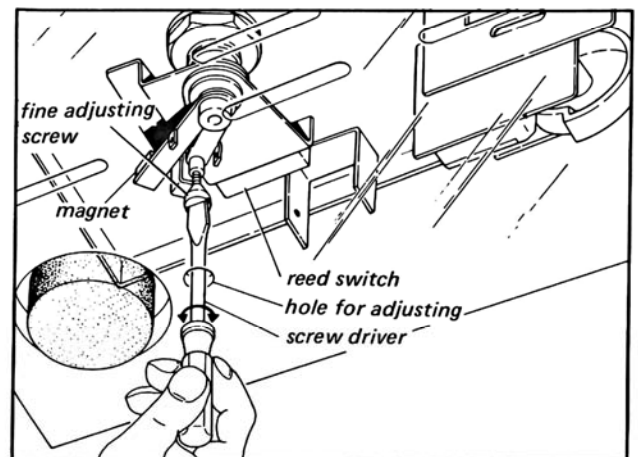
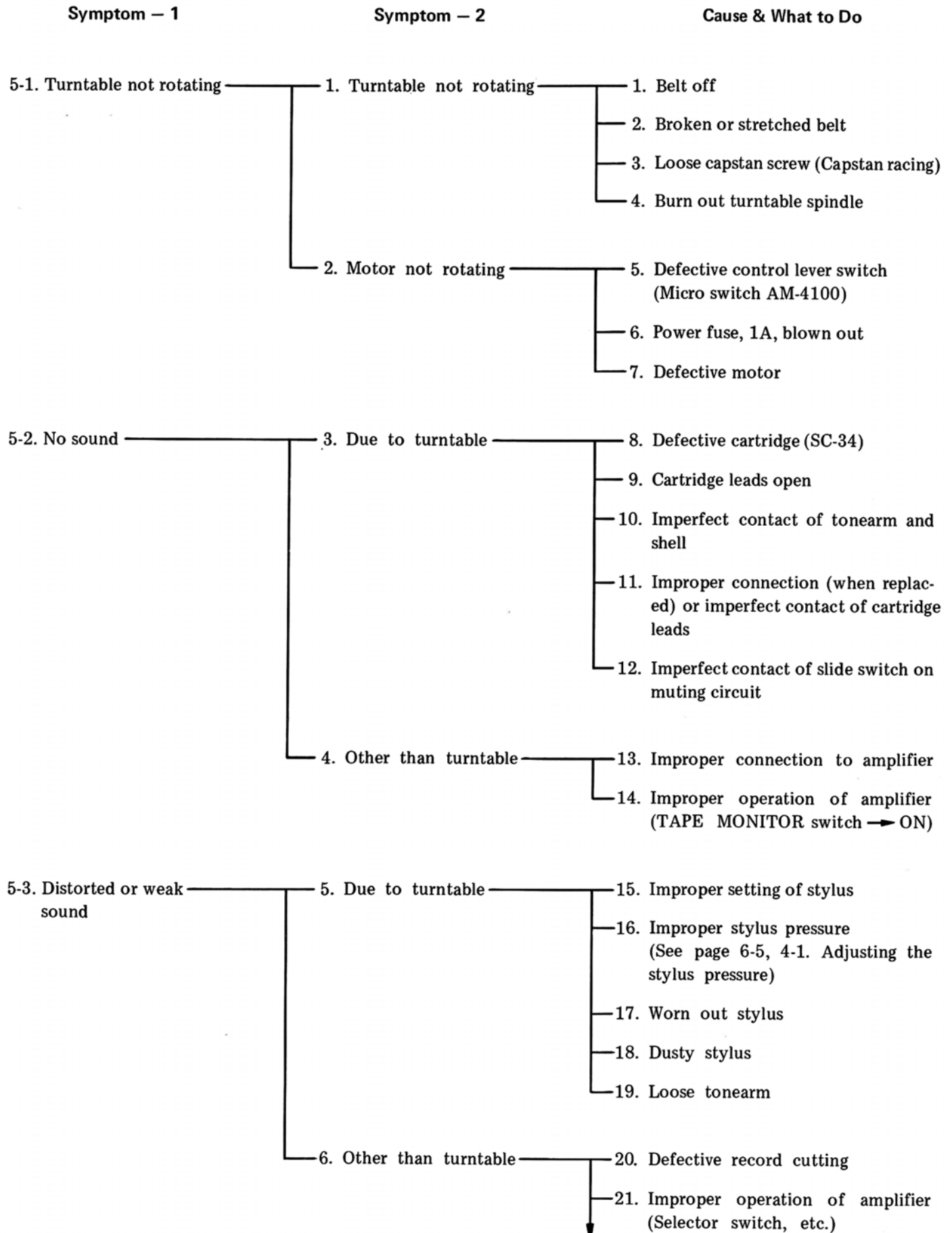


Fig. 4-3

5. TROUBLESHOOTING



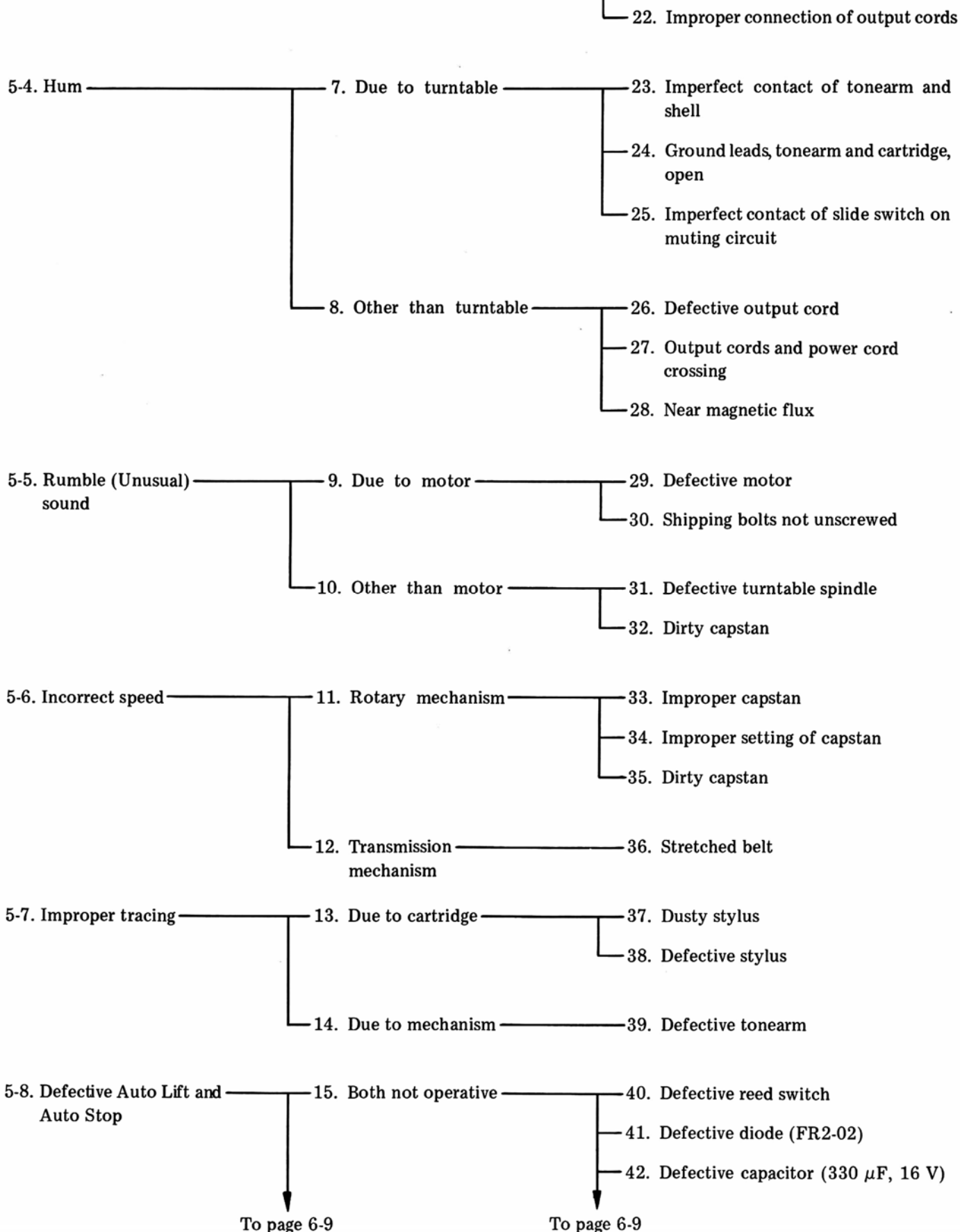
To page 6-8

Symptom – 1

Symptom – 2

Cause & What to Do

From page 6-7



Symptom – 1

Symptom – 2

Cause & What to Do

From page 6-8

From page 6-8

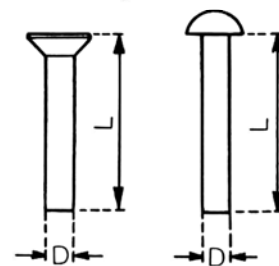
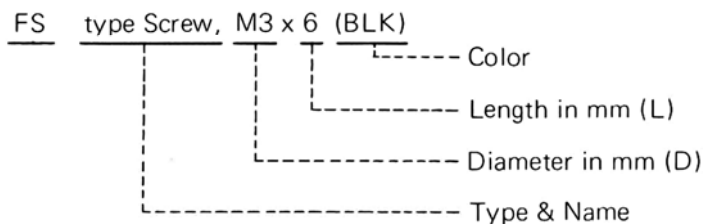
- | | |
|---|---|
| <p>16. Auto Lift not operative</p> <p>17. Auto Stop not operative</p> | <p>43. Defective relay (small)</p> <p>44. Defective diode (FR2-10)</p> <p>45. Defective plunger</p> <p>46. Defective capacitor
(470 μF, 200 WV)</p> <p>47. Loose adjustment of Auto Lift
mechanism</p> <p>48. Defective arm lifter</p> <p>49. Defective selector lever switch
(Micro switch AM-4100)</p> |
|---|---|

6. EXPLODED VIEW & PARTS LIST

Hardware Nomenclature

	Name	Abbreviation		Type
SCREW	Pan Head Screw	P		
	Binding Head Screw	B		
	Round Head Screw	R		
	Flat Countersunk Head Screw	F		
	Oval Countersunk Head Screw	O		
	Truss Head Screw	T		
	Flat Fillister Screw	FS		
	Oval Countersunk Wood Screw	OC		
	Flat Countersunk Wood Screw	FC		
	Pan Head Tapping Screw	PT		
SETSCREW	Hex. Socket Setscrew	S		
	Slot Type Setscrew	SS		
WASHER	Retaining Ring (E washer)	E		
	Plane Washer	P		
	Spring Washer	S		
	Corrugated Washer	C		
	Toothed Lock Washer	TL		

EXAMPLE



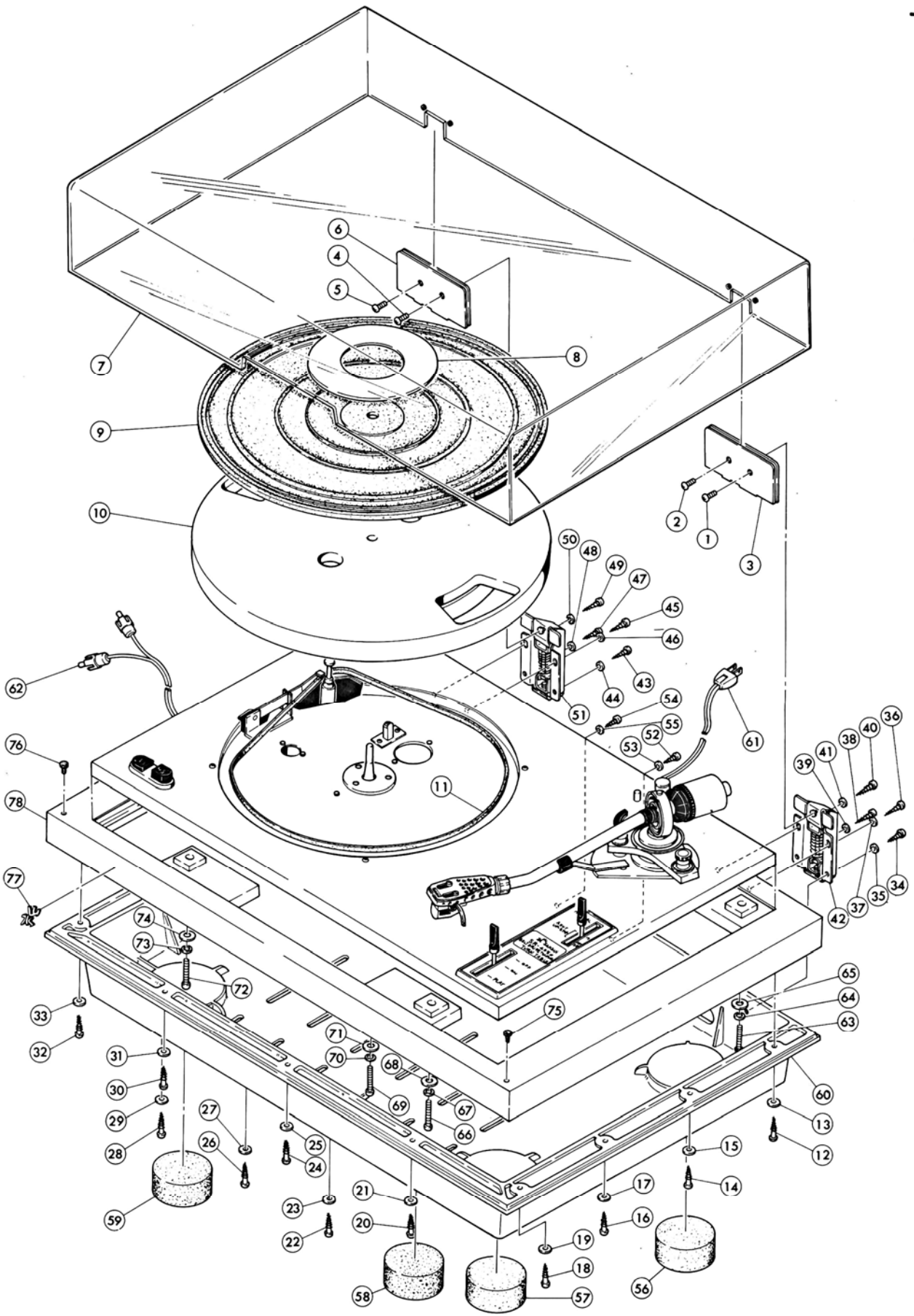
All screws conform to ISO standards, unless otherwise noted.

6-1. Exploded view (1) and parts list (See Fig. 6-1)

※ Use the stock number for parts order. If the stock number is unknown, use the model's name, fig. number, parts numebr and parts name correctly.

Parts No.	Stock No.	Description	Parts No.	Stock No.	Description
1	5100063	B Type Screw, M4 x 10	41	5120041	P Type Washer, 3 x 8 x 0.5
2	5100063	B Type Screw, M4 x 10	42	6922030	Hinge
3	6922030	Lock Plate	43	5140020	OC Type Screw, M2.7 x 20
4	5100063	B Type Screw, M4 x 10	44	5120041	P Type Washer, 3 x 8 x 0.5
5	5100063	B Type Screw, M4 x 10	45	5140020	OC Type Screw, M2.7 x 20
6	6922030	Lock Plate	46	5120041	P Type Washer, 3 x 8 x 0.5
7	5062020	Dust Cover	47	5140020	OC Type Screw, M2.7 x 20
8	5392050	Ring, turntable	48	5120041	P Type Washer, 3 x 8 x 0.5
9	5502110	Rubber Mat, turntable	49	5140020	OC Type Screw, M2.7 x 20
10	6112050	Turntable	50	5120041	P Type Washer, 3 x 8 x 0.5
11	6032050	Belt	51	6922030	Hinge
12	5140020	OC Type Screw, M2.7 x 20	52	5140020	OC Type Screw, M2.7 x 20
13	5120041	P Type Washer, 3 x 8 x 0.5	53	5120041	P Type Washer, 3 x 8 x 0.5
14	5140020	OC Type Screw, M2.7 x 20	54	5140020	OC Type Screw, M2.7 x 20
15	5120041	P Type Washer, 3 x 8 x 0.5	55	5120041	P Type Washer, 3 x 8 x 0.5
16	5140020	OC Type Screw, M2.7 x 20	56	5502030	Insulator
17	5120041	P Type Washer, 3 x 8 x 0.5	57	5502030	Insulator
18	5140020	OC Type Screw, M2.7 x 20	58	5502030	Insulator
19	5120041	P Type Washer, 3 x 8 x 0.5	59	5502030	Insulator
20	5140020	OC Type Screw, M2.7 x 20	60	5732070	Bottom Cover
21	5120041	P Type Washer, 3 x 8 x 0.5	61		AC Cord
22	5140020	OC Type Screw, M2.7 x 20	62		Output Cords
23	5120041	P Type Washer, 3 x 8 x 0.5	63	5103069	P Type Screw, M4 x 25
24	5140020	OC Type Screw, M2.7 x 20	64	5121360	S Type Washer, 4 x 1.4 x 1.0
25	5120041	P Type Washer, 3 x 8 x 0.5	65		P Type Washer, 4 x 18 x 1.6
26	5140020	OC Type Screw, M2.7 x 20	66	5103069	P Type Screw, M4 x 25
27	5120041	P Type Washer, 3 x 8 x 0.5	67	5121360	S Type Washer, 4 x 1.4 x 1.0
28	5140020	OC Type Screw, M2.7 x 20	68		P Type Washer, 4 x 18 x 1.6
29	5120041	P Type Washer, 3 x 8 x 0.5	69	5103069	P Type Screw, M4 x 25
30	5140020	OC Type Screw, M2.7 x 20	70	5121360	S Type Washer, 4 x 1.4 x 1.0
31	5120041	P Type Washer, 3 x 8 x 0.5	71		P Type Washer, 4 x 18 x 1.6
32	5140020	OC Type Screw, M2.7 x 20	72	5103069	P Type Screw, M4 x 25
33	5120041	P Type Washer, 3 x 8 x 0.5	73	5121360	S Type Washer, 4 x 1.4 x 1.0
34	5140020	OC Type Screw, M2.7 x 20	74		P Type Washer, 4 x 18 x 1.6
35	5120041	P Type Washer, 3 x 8 x 0.5	75	5502020	Cushion
36	5140020	OC Type Screw, M2.7 x 20	76	5502020	Cushion
37	5120041	P Type Washer, 3 x 8 x 0.5	77	5332020	Badge
38	5140020	OC Type Screw, M2.7 x 20	78	5732060	Cabinet
39	5120041	P Type Washer, 3 x 8 x 0.5			
40	5140020	OC Type Screw, M2.7 x 20			

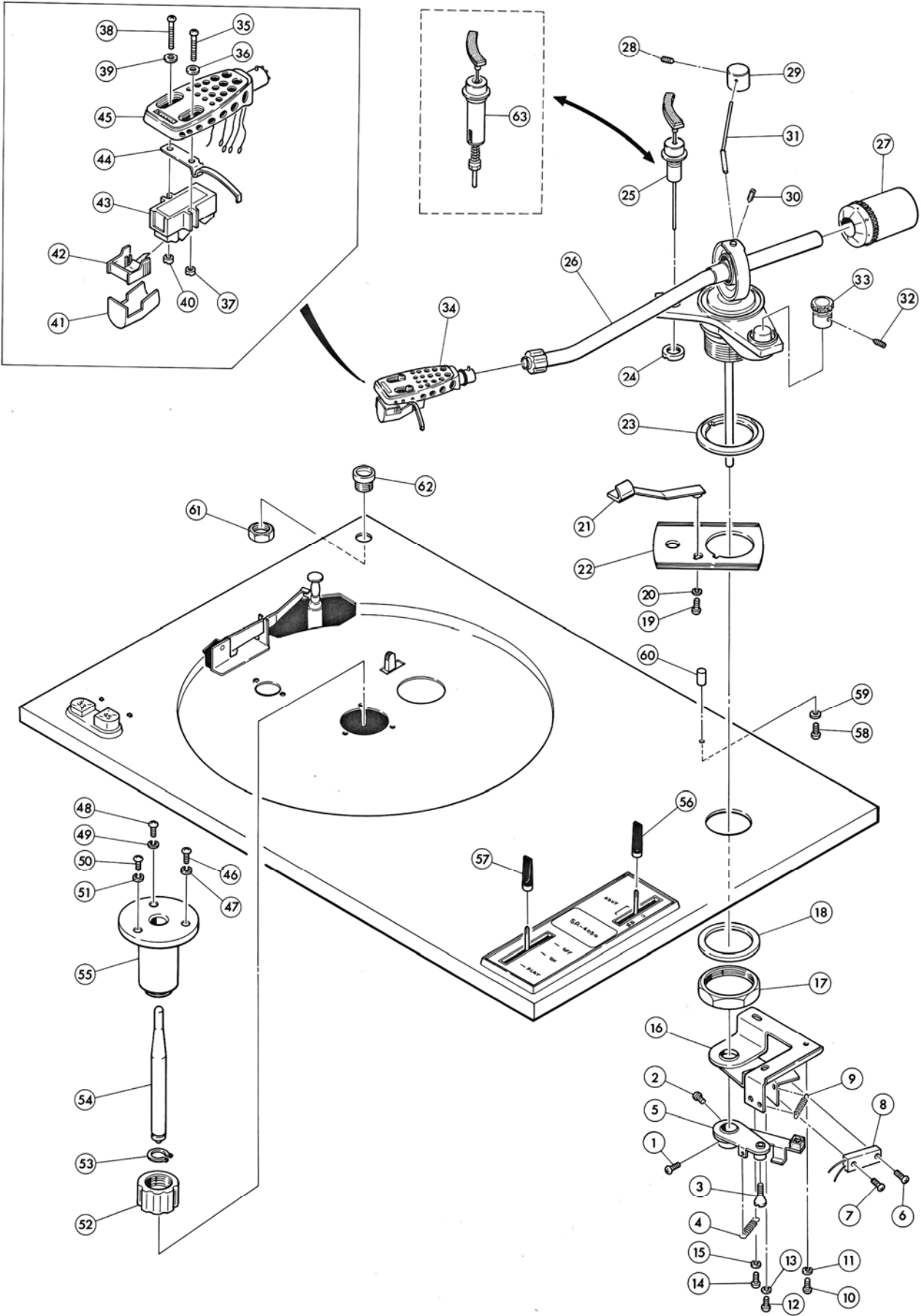
Fig. 6-1



SR-4050

Sansui

Fig. 6-2



6-2. Exploded view (2) and parts list (See Fig. 6-2)

※ Use the stock number for parts order. If the stock number is unknown, use the model's name, fig. number, parts number and parts name correctly.

Parts No.	Stock No.	Description	Parts No.	Stock No.	Description
1	5103044	P Type Screw, M3 x 8	33	5312040	Knob, inside force canceler
2	5103044	P Type Screw, M3 x 8	34		Shell (With cartridge)
3	5162100	Adjusting Screw	35		FS Type Screw, M2.6 x 15 (BLK)
4		Spring, PU plate	36		Washer, rigid polyvinyle chloride
5	7052140	PU Plate Ass'y	37		Nut, M2.6
6	5103046	P Type Screw, M3 x 12	38		FS Type Screw, M2.6 x 15 (BLK)
7	5103046	P Type Screw, M3 x 12	39		Washer, rigid polyvinyle chloride
8		Reed Switch	40		Nut, M2.6
9		Spring, auto base (4)	41		Cover, stylus
10	5103043	P Type Screw, M3 x 6	42	4940050	Stylus (SN-34)
11	5121340	S Type Washer, 3 x 1.1 x 0.7	43	4310050	Cartridge (SC-34)
12	5103043	P Type Screw, M3 x 6	44		Hook
13	5121340	S Type Washer, 3 x 1.1 x 0.7	45	6642030	Shell
14	5103043	P Type Screw, M3 x 6	46	5103062	P Type Screw, M4 x 8
15	5121340	S Type Washer, 3 x 1.1 x 0.7	47	5121360	S Type Washer, 4 x 1.4 x 1.0
16		Auto Base (4) Ass'y	48	5103062	P Type Screw, M4 x 8
	7092060	Tonearm Ass'y	49	5121360	S Type Washer, 4 x 1.4 x 1.0
17		Hex. Nut, M23	50	5103062	P Type Screw, M4 x 8
18		Washer, 23 ϕ	51	5121360	S Type Washer, 4 x 1.4 x 1.0
19	5103043	P Type Screw, M3 x 6		7032050	Turntable Spindle Ass'y
20	5121340	S Type Washer, 3 x 1.1 x 0.7	52		Cap, bearing
21	6622040	Rest, arm	53		C Type Ring, 9 ϕ
22		Plate, arm base	54		Spindle, turntable
23		Stand Base	55		Bearing, turntable
24		Nut, arm lifter	56	5312050	Cap, selector lever
25	7082050	Arm Lifter Ass'y	57	5312050	Cap, control lever
26		Tonearm	58	5103043	P Type Screw, M3 x 6
27	6912110	Main Weight Ass'y	59	5121340	S Type Washer, 3 x 1.1 x 0.7
28		SS Type Screw, M2.6 x 4	60		Stay, adaptor
29	6912100	Weight, lateral	61		Hex. Nut, M14
30		SS Type Screw, M2 x 2	62		Stay, cartridge
31	6202010	Cursor, bias	63	7082060	Arm Lifter Ass'y (New Type)
32		SS Type Screw, M3 x 3			

6-3. Exploded view (3) and parts list (See Fig. 6-3)

※ Use the stock number for parts order. If the stock number is unknown, use the model's name, fig. number, parts number and parts name correctly.

Parts No.	Stock No.	Description	Parts No.	Stock No.	Description
1	5103069	P Type Screw, M4 x 25	51	5121340	S Type Washer, 3 x 1.1 x 0.7
2	5121360	S Type Washer, 4 x 1.4 x 1.0	52	5232090	Spacer, P. C. B
3	5182010	Cup Washer, M4	53		Printed Circuit Board
4	5232070	Spacer, motor	54	5103062	P Type Screw, M4 x 8
5	5502150	Rubber Cushion, motor	55	5121360	S Type Washer, 4 x 1.4 x 1.0
6	5103069	P Type Screw, M4 x 25	56	5103062	P Type Screw, M4 x 8
7	5121360	S Type Washer, 4 x 1.4 x 1.0	57	5121360	S Type Washer, 4 x 1.4 x 1.0
8	5182010	Cup Washer, M4	58		Power Transformer
9	5232070	Spacer, motor	59	5103043	P Type Screw, M3 x 6
10	5502150	Rubber Cushion, motor	60	5121340	S Type Washer, 3 x 1.1 x 0.7
11	5103069	P Type Screw, M4 x 25	61	5103043	P Type Screw, M3 x 6
12	5121360	S Type Washer, 4 x 1.4 x 1.0	62	5121340	S Type Washer, 3 x 1.1 x 0.7
13	5182010	Cup Washer, M4	63		Voltage Selector
14	5232070	Spacer, motor	64	5103044	P Type Screw, M3 x 8
15	5502150	Rubber Cushion, motor	65	5121340	S Type Washer, 3 x 1.1 x 0.7
16	5110361	Hex. Nut, M4 x 7 x 3.2	66		P Type Washer, 3 x 15 x 1.0
17	5121360	S Type Washer, 4 x 1.4 x 1.0	67		Nylon Cord Clamper
18	5110361	Hex. Nut, M4 x 7 x 3.2	68	5103044	P Type Screw, M3 x 8
19	5121360	S Type Washer, 4 x 1.4 x 1.0	69	5121340	S Type Washer, 3 x 1.1 x 0.7
20	5110361	Hex. Nut, M4 x 7 x 3.2	70		P Type Washer, 3 x 15 x 1.0
21	5121360	S Type Washer, 4 x 1.4 x 1.0	71		Nylon Cord Clamper
22	5110361	Hex. Nut, M4 x 7 x 3.2	72	5103061	P Type Screw, M4 x 6
23	5121360	S Type Washer, 4 x 1.4 x 1.0	73	5121360	S Type Washer, 4 x 1.4 x 1.0
24	5242110	Sheet, motor	74	5103061	P Type Screw, M4 x 6
25		SS Type Screw, M3 x 3	75	5121360	S Type Washer, 4 x 1.4 x 1.0
26	6142090	Capstan (50 Hz)	76		MP Capacitor 1.5 μF + 0.6 μF 250V
	6142100	Capstan (60 Hz)			
27	4320050	Motor	77	5103044	P Type Screw, M3 x 8
28	5103044	P Type Screw, M3 x 8	78	5121340	S Type Washer, 3 x 1.1 x 0.7
29	5121340	S Type Washer, 3 x 1.1 x 0.7	79	5103044	P Type Screw, M3 x 8
30		Card Clamper	80	5121340	S Type Washer, 3 x 1.1 x 0.7
31	5103044	P Type Screw, M3 x 8	81		Electrolytic Capacitor, 470 μF 200 V
32	5121340	S Type Washer, 3 x 1.1 x 0.7			
33	5120141	P Type Washer, 3 x 8 x 0.5	82	5103043	P Type Screw, M3 x 6
34	5103044	P Type Screw, M3 x 8	83	5121340	S Type Washer, 3 x 1.1 x 0.7
35	5121340	S Type Washer, 3 x 1.1 x 0.7	84	5103043	P Type Screw, M3 x 6
36		Cord Clamper	85	5121340	S Type Washer, 3 x 1.1 x 0.7
37	5103044	P Type Screw, M3 x 8	86	6932030	Oil Cup
38	5121340	S Type Washer, 3 x 1.1 x 0.7	87	5103043	P Type Screw, M3 x 6
39	5120141	P Type Washer, 3 x 8 x 0.5	88	5121340	S Type Washer, 3 x 1.1 x 0.7
40	5062060	Case, PC board	89	5103043	P Type Screw, M3 x 6
41	5103046	P Type Screw, M3 x 12	90	5121340	S Type Washer, 3 x 1.1 x 0.7
42	5121340	S Type Washer, 3 x 1.1 x 0.7	91		Name Plate, frequency
43	5232090	Spacer, P. C. B	92		Slide Switch,
44	5103046	P Type Screw, M3 x 12	93	5103043	P Type Screw, M3 x 6
45	5121340	S Type Washer, 3 x 1.1 x 0.7	94	5121340	S Type Washer, 3 x 1.1 x 0.7
46	5232090	Spacer, P. C. B.	95		Enameld Wirewound Resistor, 100 + 200 Ω 10W
47	5103046	P Type Screw, M3 x 12			
48	5121340	S Type Washer, 3 x 1.1 x 0.7	96	2110070	4-Lug Terminal Strip
49	5232090	Spacer, P. C. B			
50	5103046	P Type Screw, M4 x 12			

Fig. 6-3

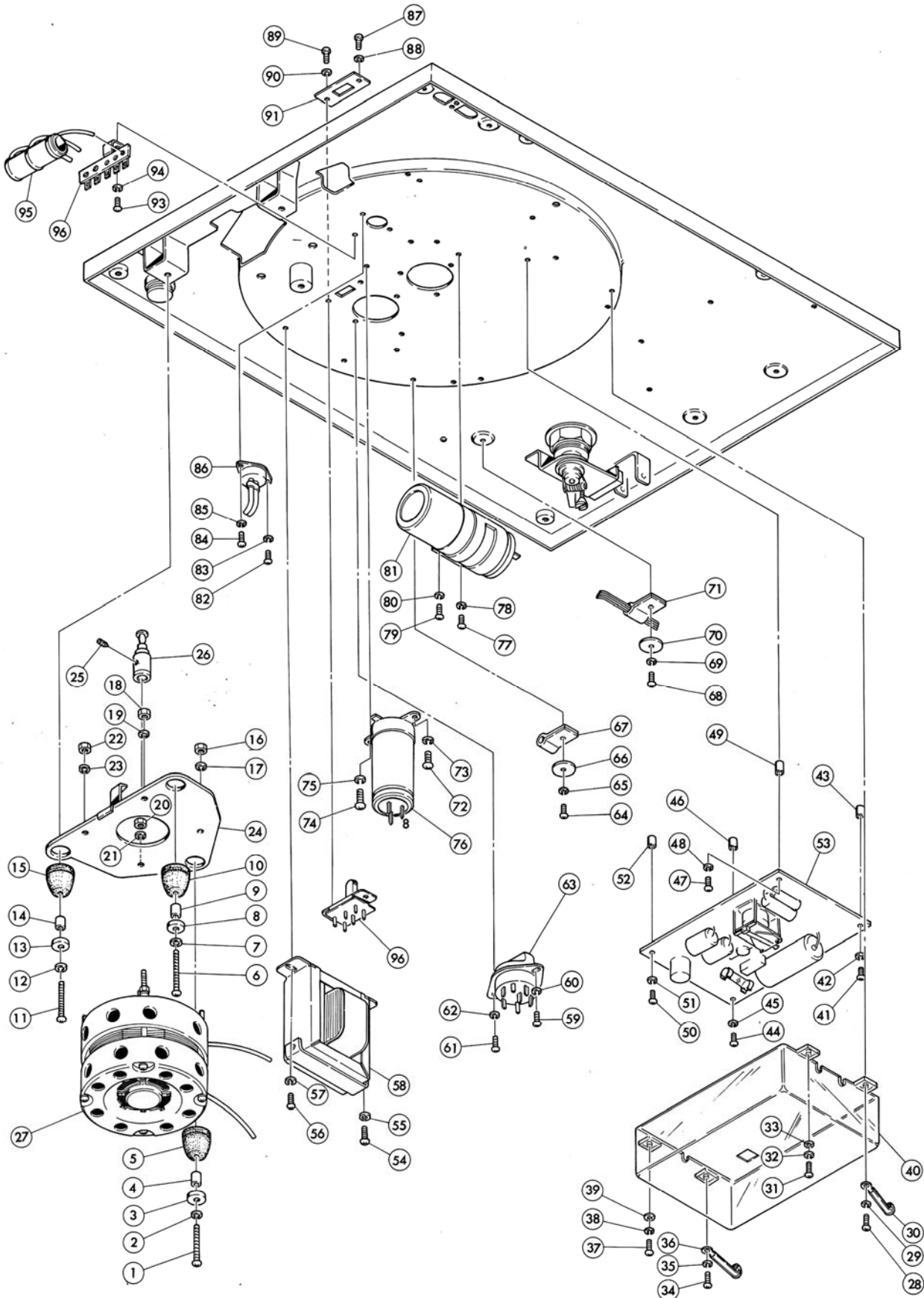
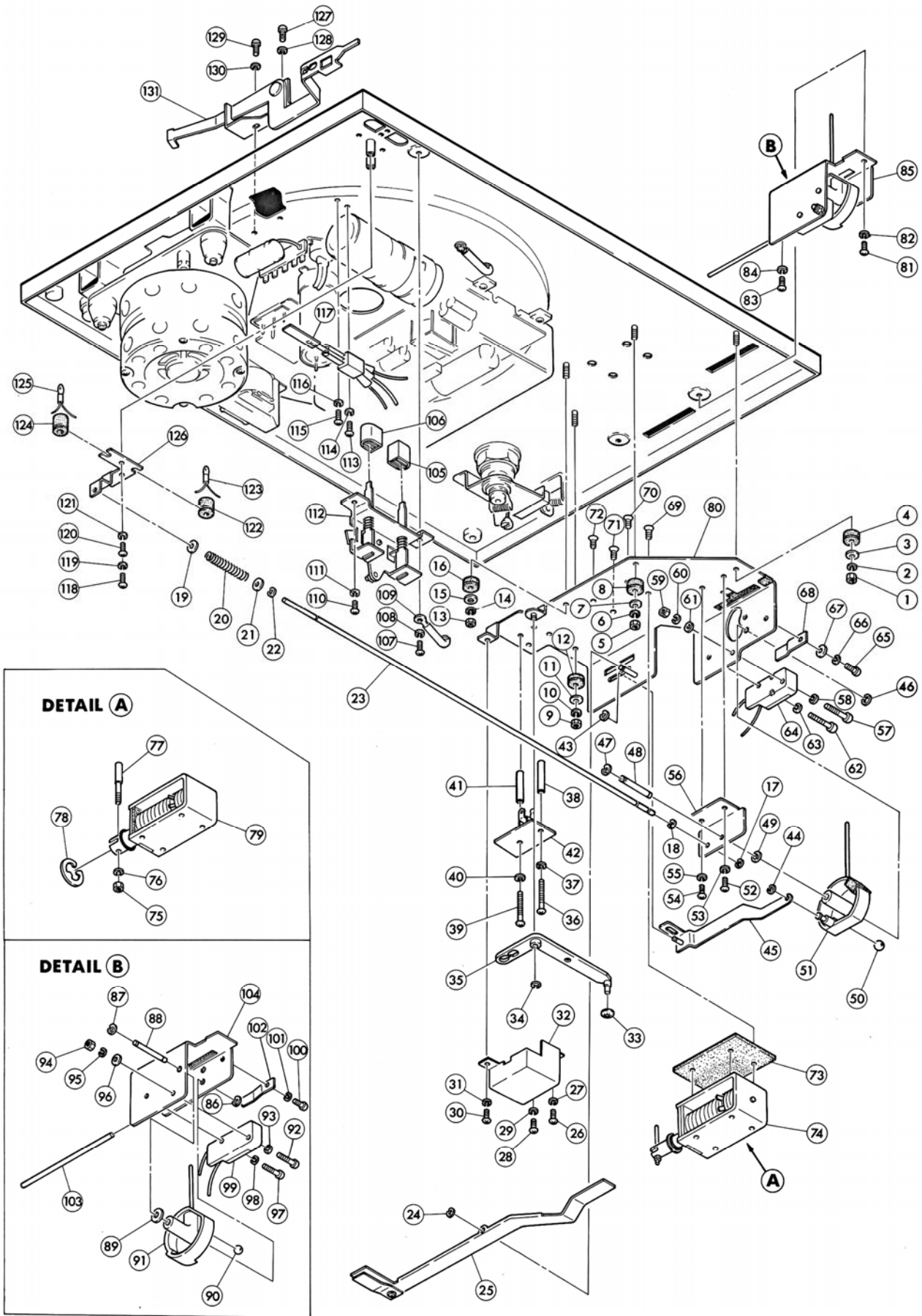


Fig. 6-4



6-4. Exploded view (4) and parts list (See Fig. 6-4)

※ Use the stock number for parts order. If the stock number is unknown, use the model's name, fig. number, parts number and parts name correctly.

Parts No.	Stock No.	Description	Parts No.	Stock No.	Description
1	5110241	Hex. Nut, M3 x 5.5 x 2.4	67	5120041	P Type Washer, 3 x 8 x 0.5
2	5121340	S Type Washer, 3 x 1.1 x 0.7	68		Leaf Spring, control lever
3	5120041	P Type Washer, 3 x 8 x 0.5	69	5103044	P Type Screw, M3 x 8
4	5502160	Rubber Cushion, auto base (1)	70	5103044	P Type Screw, M3 x 8
5	5110241	Hex Nut, M3 x 5.5 x 2.4	71	5103044	P Type Screw, M3 x 8
6	5121340	S Type Washer, 3 x 1.1 x 0.7	72	5103044	P Type Screw, M3 x 8
7	5120041	P Type Washer, 3 x 8 x 0.5	73		Rubber Mat, plunger
8	5502160	Rubber Cushion, auto base (1)	74		Plunger Ass'y
9	5110241	Hex. Nut, M3 x 5.5 x 2.4	75	5110241	Hex. Nut, M3 x 5.5 x 2.4
10	5121340	S Type Washer, 3 x 1.1 x 0.7	76	5121340	S Type Washer, 3 x 1.1 x 0.7
11	5120041	P Type Washer, 3 x 8 x 0.5	77		Plunger Pin
12	5502160	Rubber Cushion, auto base (1)	78		E Type Ring, 7 φ
13	5110241	Hex. Nut, M3 x 5.5 x 2.4	79		Plunger
14	5121340	S Type Washer, 3 x 1.1 x 0.7	80		Auto Base (1)
15	5120041	P Type Washer, 3 x 8 x 0.5	81	5103043	P Type Screw, M3 x 6
16	5502160	Rubber Cushion, auto base (1)	82	5121340	S Type Washer, 3 x 1.1 x 0.7
17	5151004	E Type Ring, 3 φ	83	5103043	P Type Screw, M3 x 6
18	5151004	E Type Ring, 3 φ	84	5121340	S Type Washer, 3 x 1.1 x 0.7
19	5120041	P Type Washer, 3 x 8 x 0.5	85		Control Lever Ass'y
20		Spring, stopper shaft	86	5151004	E Type Ring, 3 φ
21	5120041	P Type Washer, 3 x 8 x 0.5	87	5151004	E Type Ring, 3 φ
22	5151004	E Type Ring, 3 φ	88		Shaft, lift cam
23	6512040	Link (A)	89	5120061	P Type Washer, 4 x 10 x 0.8
24	5151004	E Type Ring, 3 φ	90		Steel Ball
25	6502100	Lift Lever	91	6012040	Auto Cam (B)
26	5103043	P Type Screw, M3 x 6	92	5103048	P Type Screw, M3 x 15
27	5121340	S Type Washer, 3 x 1.1 x 0.7	93	5121340	S Type Washer, 3 x 1.1 x 0.7
28	5103043	P Type Screw, M3 x 6	94	5110241	Hex. Nut, M3 x 5.5 x 2.4
29	5121340	S Type Washer, 3 x 1.1 x 0.7	95	5121340	S Type Washer, 3 x 1.1 x 0.7
30	5103043	P Type Screw, M3 x 6	96	5120041	P Type Washer, 3 x 8 x 0.5
31	5121340	S Type Washer, 3 x 1.1 x 0.7	97	5103048	P Type Screw, M3 x 15
32		Shield Case, muting circuit	98	5121340	S Type Washer, 3 x 1.1 x 0.7
33		Washer	99	1160040	Micro Switch, AM-4100
34	5151004	E Type Ring, 3 φ	100	5103043	P Type Screw, M3 x 6
35	6502110	Auto Lever (1)	101	5121340	S Type Washer, 3 x 1.1 x 0.7
36		P Type Screw, M3 x 30	102		Leaf Spring, selector lever
37	5121340	S Type Washer, 3 x 1.1 x 0.7	103		Link (B)
38	5232100	Spacer, muting circuit	104		Auto Base (3)
39		P Type Screw, M3 x 30	105	5322040	Pushbutton (45)
40	5121340	S Type Screw, 3 x 1.1 x 0.7	106	5322030	Pushbutton (33)
41	5232100	Spacer, muting circuit	107	5103043	P Type Screw, M3 x 6
42	7732020	Muting Printed Circuit Board	108	5121340	S Type Washer, 3 x 1.1 x 0.7
43	5151004	E Type Ring, 3 φ	109		Cord Clamper
44	5151004	E Type Ring, 3 φ	110	5103043	P Type Screw, M3 x 6
45	6502120	Auto Lever (2)	111	5121340	S Type Washer, 3 x 1.1 x 0.7
46	5151004	E Type Ring, 3 φ	112	7062060	Speed Selector Ass'y
47	5151004	E Type Ring, 3 φ	113	5103043	P Type Screw, M3 x 6
48		Shaft, lift cam	114	5121340	S Type Washer, 3 x 1.1 x 0.7
49	5120041	P Type Washer, 3 x 8 x 0.5	115	5103043	P Type Screw, M3 x 6
50		Steel Ball	116	5121340	S Type Washer, 3 x 1.1 x 0.7
51	6012030	Auto Cam (A)	117		Leaf Switch
52	5103043	P Type Screw, M3 x 6	118	5103043	P Type Screw, M3 x 6
53	5121340	S Type Washer, 3 x 1.1 x 0.7	119	5121340	S Type Washer, 3 x 1.1 x 0.7
54	5103043	P Type Screw, M3 x 6	120	5103043	P Type Screw, M3 x 6
55	5121340	S Type Washer, 3 x 1.1 x 0.7	121	5121340	S Type Washer, 3 x 1.1 x 0.7
56		Auto Base (2)	122	5502170	Rubber Bushing, pilot lamp
57	5103048	P Type Screw, M3 x 15	123		Pilot Lamp, 6V
58	5121340	S Type Washer, 3 x 1.1 x 0.7	124	5502170	Rubber Bushing, pilot lamp
59	5110241	Hex. Nut, M3 x 5.5 x 2.4	125		Pilot Lamp, 6V
60	5121340	S Type Washer, 3 x 1.1 x 0.7	126		Lock Holder
61	5120041	P Type Washer, 3 x 8 x 0.5	127	5103043	P Type Screw, M3 x 6
62	5103048	P Type Screw, M3 x 15	128	5121340	S Type Washer, 3 x 1.1 x 0.7
63	5121340	S Type Washer, 3 x 1.1 x 0.7	129	5103043	P Type Screw, M3 x 6
64	1160040	Micro Switch (AM-4100)	130	5121340	S Type Washer, 3 x 1.1 x 0.7
65	5103043	P Type Screw, M3 x 6	131		Selector Lever Ass'y
66	5121340	S Type Washer, 3 x 1.1 x 0.7			

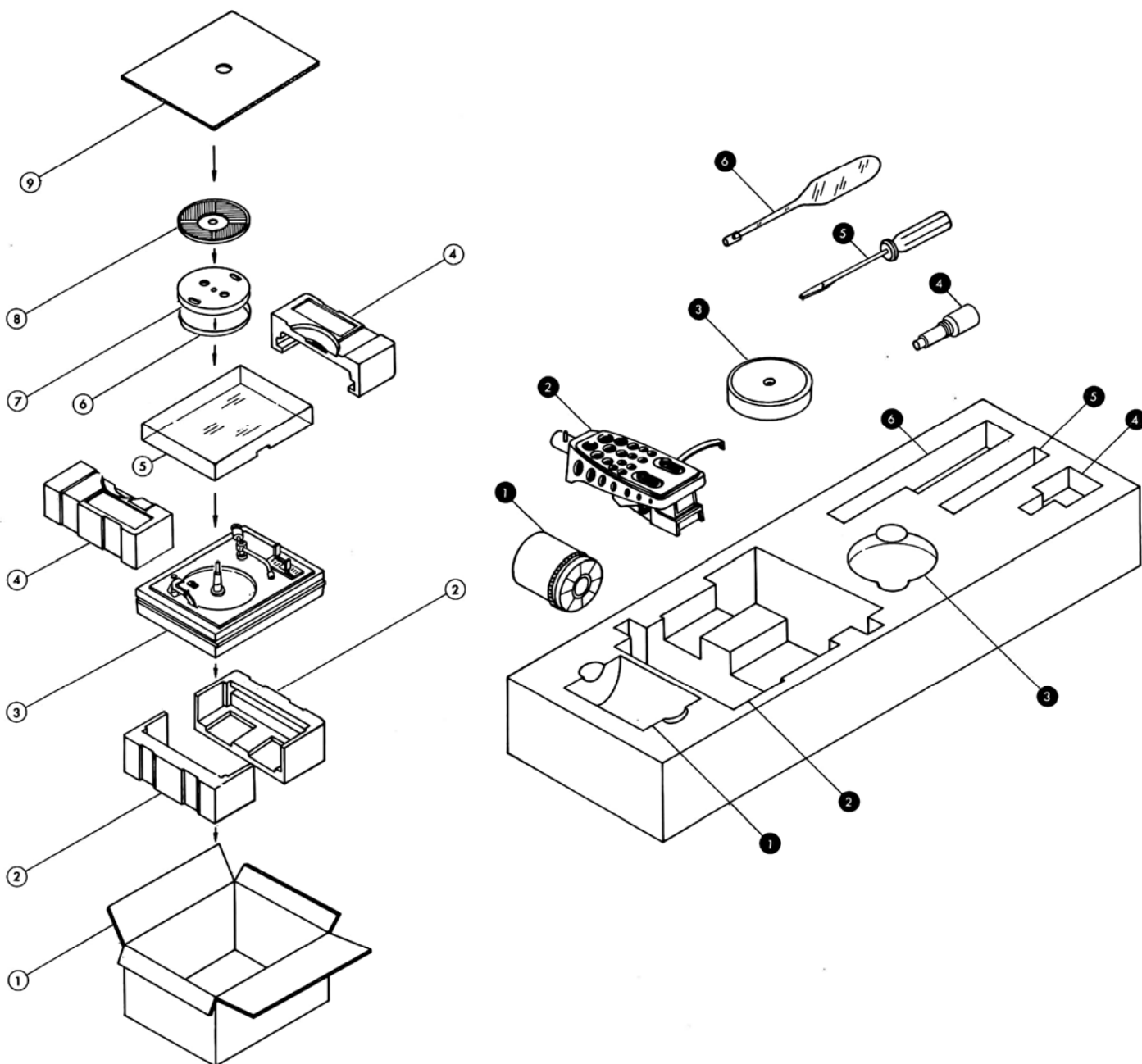
6-5. Packing and accessories list

Packing list

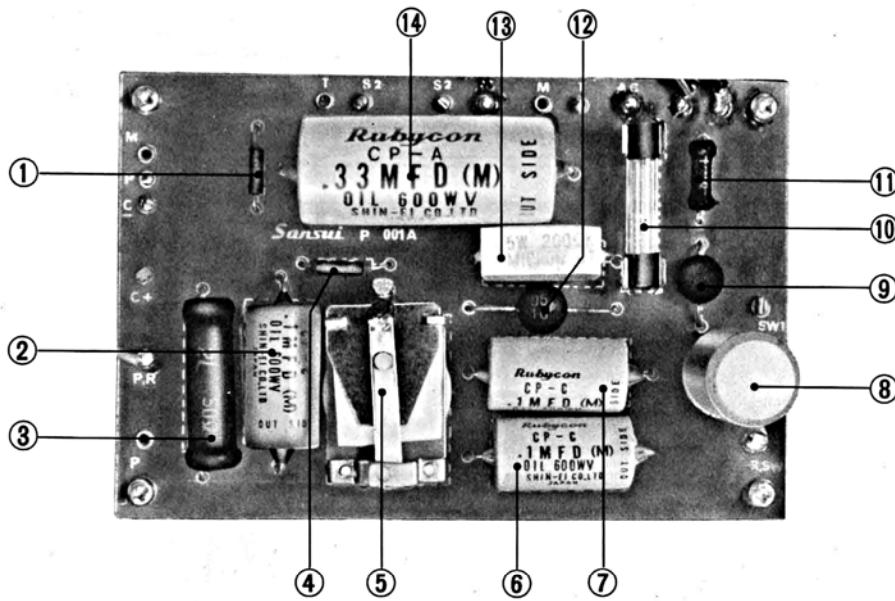
Parts No.	Stock No.	Description
1		Carton Case
2		Foamed Polystyrene Package (Lower)
3		Record Player
4		Foamed Polystyrene Package (Upper)
5	5062020	Dust Cover
6	6032050	Belt
7	6112050	Turntable
8	5502110	Turntable Rubber Mat
9		Inner Packing

Accessories list

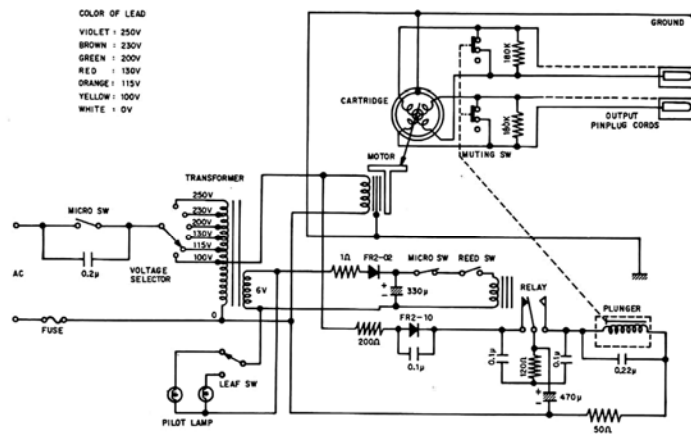
Parts No.	Stock No.	Description
1	6912110	Main Weight
2		Shell (with cartridge)
3		45 rpm Adaptor
4		Sub Weight
5		Screwdriver
6		Oil Feeder



6-6. Auto Lift circuit board



Parts No.	Stock No.	Description
1	0101479	5 Ω ¼ W Carbon Resistor
2	0591108	0.1 μF 600 V Oil Capacitor
3	0142500	50 Ω 2 W Wire Wound Resistor
4	0101124	120 Ω ¼ W Carbon Resistor
5		Relay
6	0591108	0.1 μF 600 V Oil Capacitor
7	0591108	0.1 μF 600 V Oil Capacitor
8	0512331	330 μF 16 V Electrolytic Capacitor
9		FR2-02 Diode
10		1A 125 V Power Fuse
11	0141109	1 Ω 1 W Wire Wound Resistor
12		FR2-10 Diode
13	0155201	200 Ω 5 W Cement Resistor
14	0591208	0.2 μF Oil Capacitor



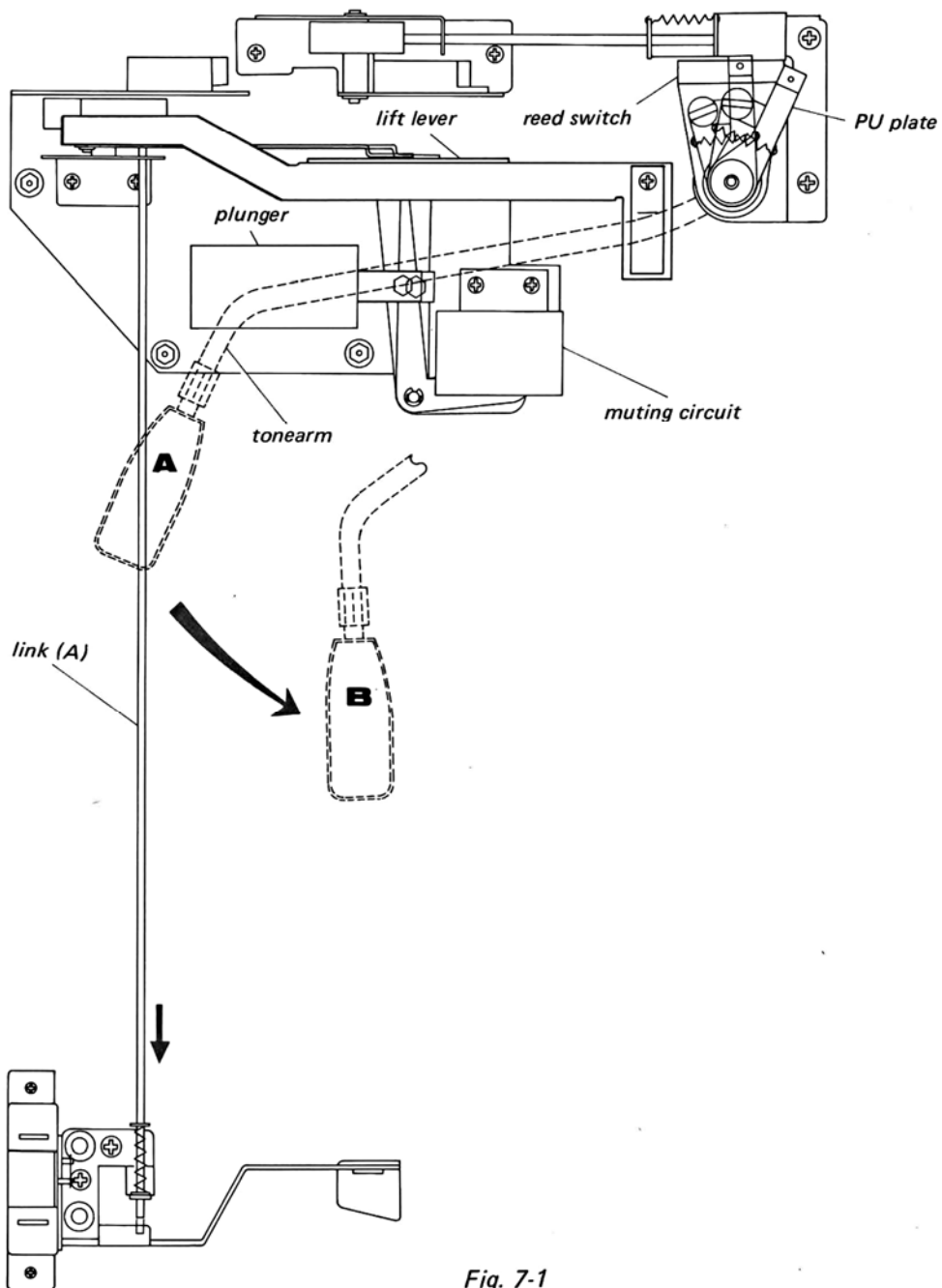
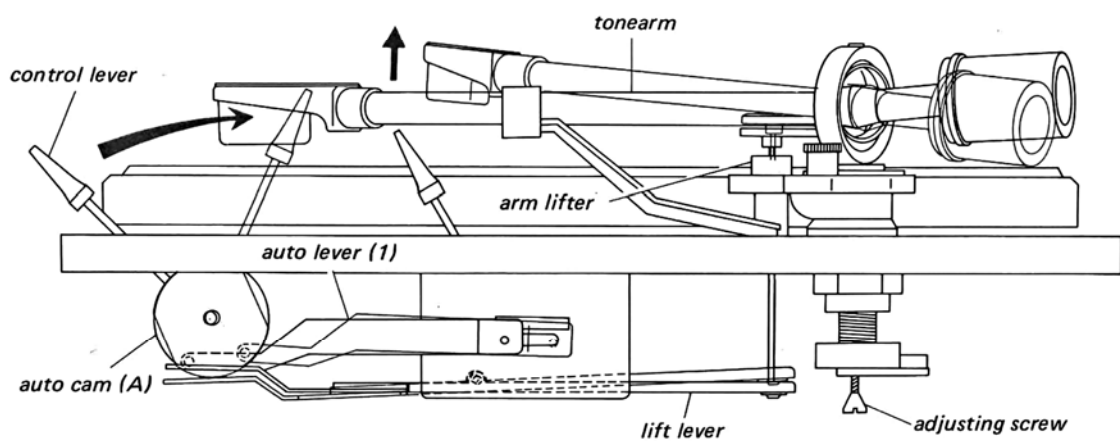
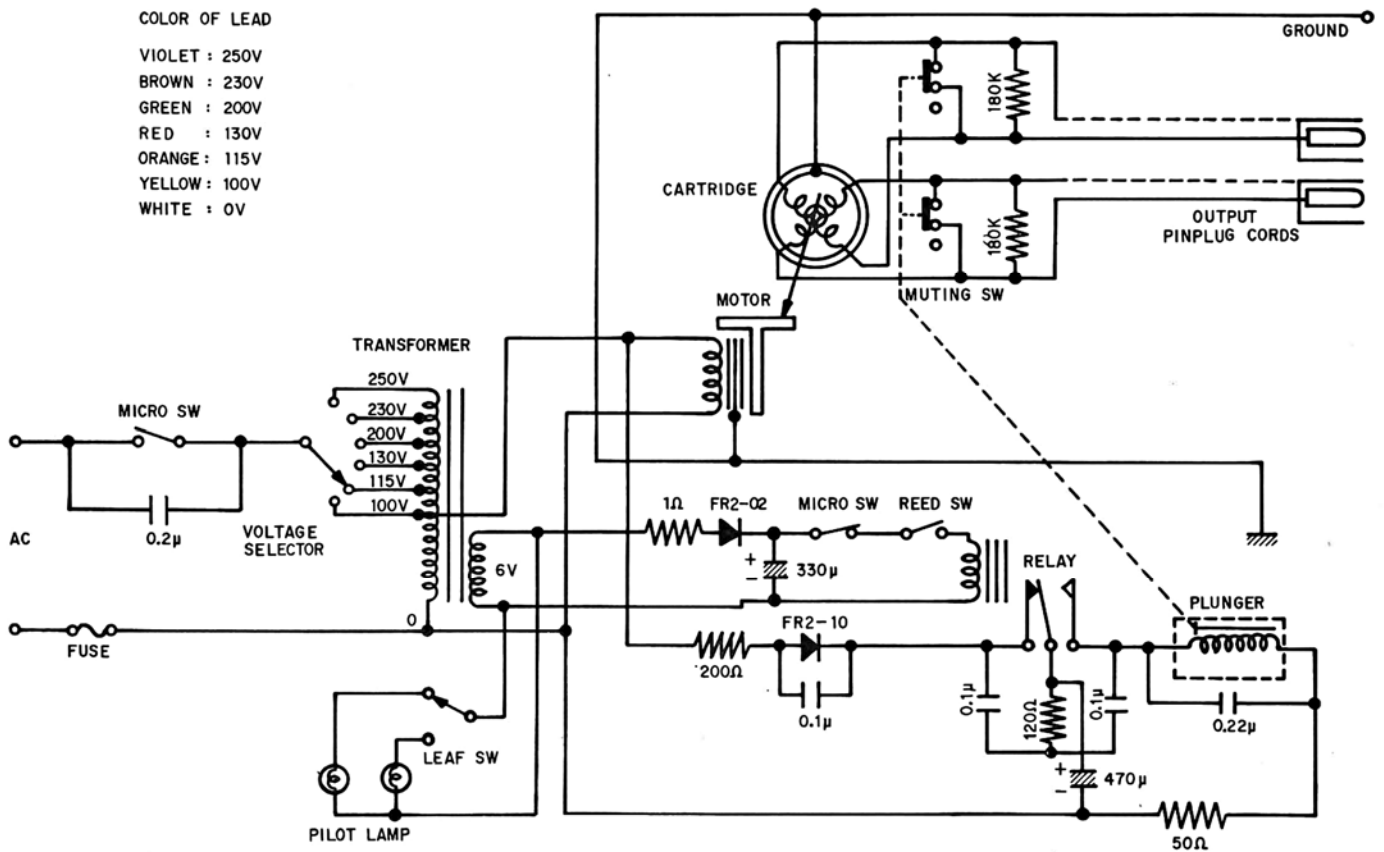


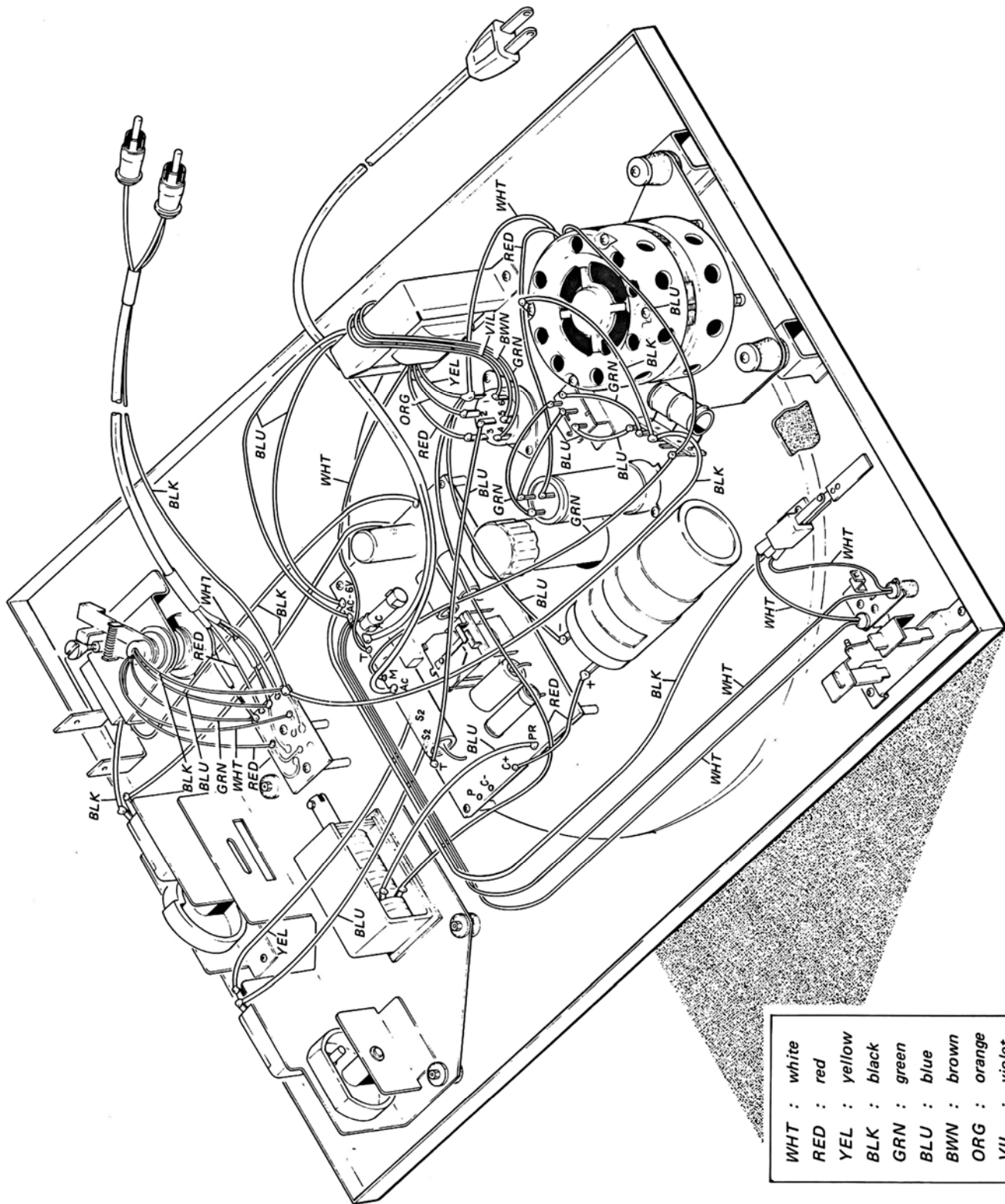
Fig. 7-1

7. OPERATION OF AUTO LIFT AND STOP MECHANISM

1. The tonearm moves from "A" to "B" position while playing as Fig. 7-1.
2. At this time, the capacitors (330 μ F, 200 WV, 470 μ F, 16 WV) are charged by the current through the diodes (FRZ-02, FR2-10).
3. As soon as the stylus reaches "B" position (the finishing groove), the magnetic reed switch will be ON.
4. When the magnetic reed switch is ON, the relay will be actuated.
5. The discharging current from the capacitors operates the plunger.
6. When the plunger is actuated, the lift lever elevates the arm lifter and tonearm so that the stylus is raised from the record.
7. The Auto cam (A) is linked with the plunger so that the control lever returns to OFF position from PLAY.
8. At the same time, the muting circuit linked with the plunger will keep the terminals of the cartridge shorted.



8. WIRING DIAGRAM



WHT	: white
RED	: red
YEL	: yellow
BLK	: black
GRN	: green
BLU	: blue
BWN	: brown
ORG	: orange
VIL	: violet